

Operating Instructions

Parts List



Fork Lifter SFH1016AG,SFH1025AG,SFH1030AG
1.0T

Note: Owner and operator MUST read and understand this operating instructions before use this hand stacker.

Please read and save these instructions. Read carefully before attempting to assemble, install, operate, or maintain the product described. Protect yourself and others by observing all safety information. Failure to comply with instructions could result in personal injury and/or property damage! Retain instructions for future reference.

1. Description

The Fork Lifts are designed for manual lifting, lowering, and transporting of loads on firm and level surfaces, including workshops, warehouses, stockrooms, receiving departments, throughout a plant, and wherever aisles and congested areas prevent the use of larger equipment.

Specifications for multiple types of lifts may be described in these Operating Instructions. During operation and maintenance, apply the relevant aspects for the Fork Lift that you have purchased.

2. General Safety Information

Only authorized and trained operators should use this product.

CAUTION Never exceed the maximum capacity of the lift. Load must be evenly distributed and load center limits must not be exceeded.

CAUTION Use caution and be aware of pinch and crush points. Never place hands, feet, or objects under forks or platform. Never reach into moving parts.

CAUTION Do not use on inclines or uneven surfaces.

CAUTION Never leave the load unattended in a raised position.

CAUTION Transporting or lifting persons is not permitted.

3. Specifications

Model	Load Capacity (kg)	Max. Lifting Height (mm)	Lifting Height Min. (mm)	fork Length (mm)	Overall Length (mm)	Overall Width (mm)	Overall Height (mm)	Load Center (mm)	Wheels
SFH1016AG	1000	1600	60	915	1430	1124~1404	1985	500	2 rigid, 2 swivel
SFH1025AG	1000	2500	60	915	1430	1124~1404	1835	500	2 rigid, 2 swivel
SFH1030AG	1000	3000	60	915	1430	1124~1404	2085	500	2 rigid, 2 swivel

4. Assembly

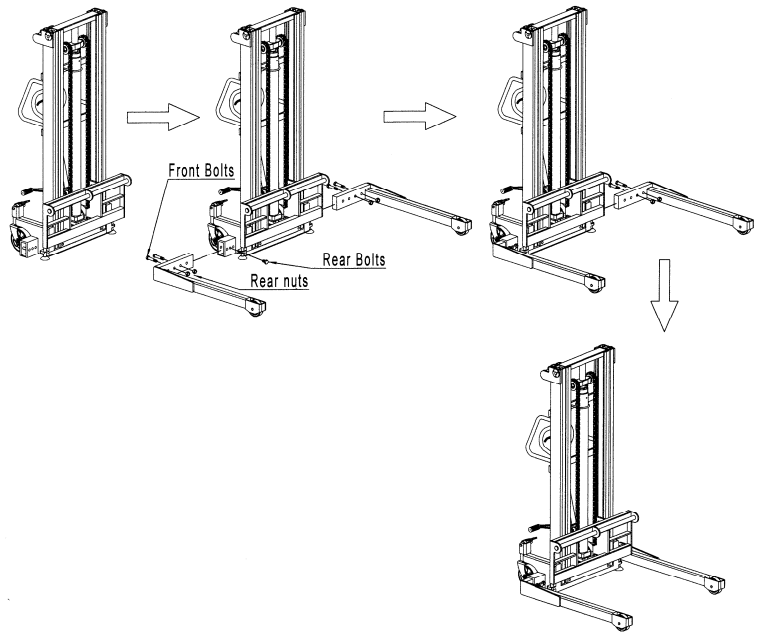
STRADDLE LEG AND FORK ASSEMBLY INSTRUCTIONS

This stacker may require assembly. If so, carefully follow the assembly instructions taking care to heed all safety precautions. Some tools are required, including wrenches, a dead blow or other non-marring hammer, snap ring pliers, and a hoisting device such as a crane.

CAUTION Do not remove the stacker from the pallet. The stacker should remain secured to the pallet until after assembly is completed. Failure to follow this instruction could cause serious injury. Stabilizing the stacker during assembly using a suitable crane or hoist is recommended.

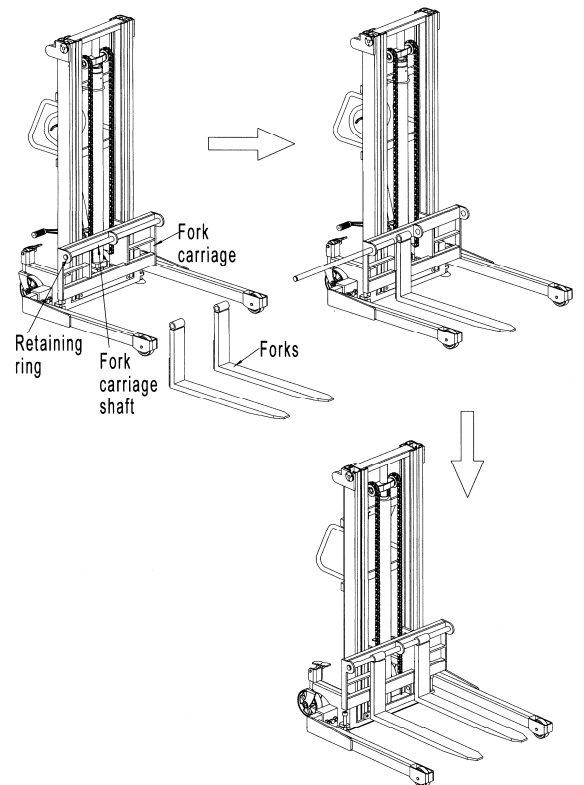
STRADDLE LEG ASSEMBLY

1. Unscrew and remove the bolts and nuts on the front and rear of the stacker.
2. Slide the leg into the slot of the body to the desired position.
3. Insert and tighten the bolts and nuts on the front and rear securely.
4. Assemble the other leg following the above steps.
5. Remove the stacker from the pallet using a crane or other suitable lifting device.



FORK ASSEMBLY

1. Use snap ring pliers to remove the retaining ring and the fork carriage shaft from the carriage.
2. Place the forks so that the holes of the forks match up to the hole for the carriage shaft. You may need someone to help hold the forks in place.
3. Insert the shaft into the hole in the fork carriage, passing through the holes in the forks. Adjust the fork placement as necessary.
4. Use snap ring pliers to insert the retaining ring to lock the shaft in place.



PEDAL ASSEMBLY

1. Unscrew and remove the bolts and nuts on the lever of pedal.
2. Insert the pedal into the lever of pedal.
3. Insert and tighten the bolts and nuts on the lever of pedal.

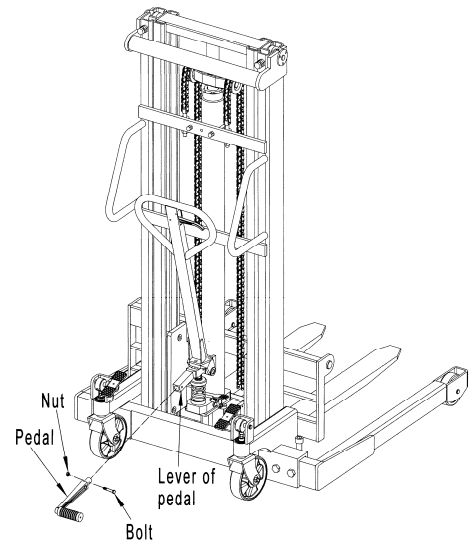
5. Operation

Arefully read all manuals included with this product **before** putting into service. Never exceed the maximum capacity of the lift.

Fully read and follow the instructions for “Releasing air from the pump” in the **Functional description** Maintenance section of this manual **before** putting your Dayton lift into service. Inspect the lift prior to each use. Discontinue use immediately if any problems, defects, or repair needs are discovered.

Pre-operation check list:

- Check the function of all moving parts, including rollers, wheels, axles, etc.
- If your lift is equipped with a parking brake, check the function of the parking brake.
- Check load chain for adjustment, tension, and wear.



FOR LIFTS EQUIPPED WITH A PARKING BRAKE

Utilize the parking brake when placing loads, elevating loads, and when lift is not in use. Activate the brake by pressing the center pedal. Release the brake by pressing the lever to the left or right of the center pedal.

LIFTING A LOAD

Ensure that the load does not exceed the capacity of the lift, and that the load does not exceed the size of the forks or platform.

Roll the lift slowly up to the load and position the forks under the pallet/load until the back of the forks rests against the load, or manually place the load onto the platform or forks.

▲ WARNING *Do not load the lift in its raised position. The load must be evenly distributed across both forks or across the platform. The load center of gravity must not be exceeded.*

Raise the load by pumping the foot pedal or the handle until it reaches the desired height.

MOVING A LOAD

The load should be in lowest possible position (while still maintaining clearance under the load) whenever transporting a load.

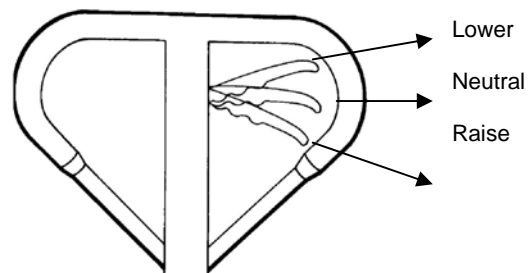
Travel at a steady speed, being mindful of the load and the floor conditions.

▲ WARNING *Do not operate the lift on gradients or uneven surfaces.*

LOWERING A LOAD

Maneuver the load to its desired location and actuate the parking brake. Ensure there is nothing under the load, then pull the control handle on the **LOWER** position to lower the load to the desired height.

Lower completely when not in use.



TO RAISE

Insert the forks into the pallet. Move the control lever into RAISE position. With an up/down motion of the handle, pump the load to the desired height.

NEUTRAL

When finished raising the lifter, move control lever into NEUTRAL position. Move the lifter to desired location.

TO LOWER

Move the control lever into the LOWER position until desired height has been reached.

NOTE: The lever should automatically move into the NEUTRAL position when released. If this does not happen, adjust accordingly.

ADJUSTMENT

Test each of the functions by pumping the handle with the control lever in each of the three positions. If the functions do not operate as listed, perform the required adjustments as noted below. Over time, normal use and vibration may cause your lifter to require additional periodic adjustments.

1. If the forks do not elevate while pumping in the RAISE position, turn the adjusting nut (104) and/or set screw (234) counterclockwise until the forks elevate while pumping in the RAISE position.
2. If the forks do not descend when the control lever is in the LOWER position, turn the adjusting nut and/or set screw clockwise until the control lever lowers the forks properly.
3. If the forks elevate while pumping in the NEUTRAL position, turn the adjusting nut and/or set screw clockwise until pumping action does not raise the forks and the NEUTRAL position functions properly.
4. If the forks descend while lever is in the NEUTRAL position, turn the adjusting nut and/or set screw counterclockwise until the forks do not lower.

After making an adjustment, be sure to check all functions to be sure they haven't been affected **before operating the unit**.

6. Maintenance

▲ WARNING *Remove loads before performing inspection or maintenance work. Only use genuine spare parts.*

ADDING OIL

If the forks/platform won't raise to the rated height, you may need to add hydraulic fluid. Hydraulic fluid must be ISO VG32 or equivalent with a viscosity of 30cSt at 104° F (40° C). Mixing of different fluids is prohibited! Total oil volume is about 2 quarts. Check the oil level every six months.

NOTE: Waste oil must be disposed of in an environmentally-friendly way and in accordance with regulatory authorities.

LUBRICATION

Periodically lubricate all grease fittings according to the required maintenance schedule, or after any thorough cleaning that may excessively remove grease from critical lube points, using multipurpose lubricating grease ZG2# or 3#.

RELEASING AIR FROM THE PUMP

Air may enter the hydraulic oil during transportation or if the unit is tipped, such that the forks don't elevate immediately while pumping in the "raise" position. To release air from the pump, let the control handle on the **LOWER** position, then move the draw-bar up and down for several times.

DAILY INSPECTION AND MAINTENANCE

Daily inspection of the lift can greatly reduce wear and maintenance. Special attention should be paid to the wheels, casters, and carriage rollers, inspecting for obstructions of any kind.

RECOMMENDED MAINTENANCE INTERVALS

The service life of your lift is limited. Worn parts must be replaced promptly.

DAILY:

- Check moving parts and operating controls for proper operation
- Check wheels and carriage rollers for wear or slop
- Check load chain for adjustment, tension, and wear
- Grease the chain if necessary

1 MONTH:

- Grease joints and bearings
 - Check function and turning capability of wheels and rollers
 - Check hydraulic system for leakage and full range of motion
- #### 3 MONTHS:
- Check hydraulic oil level with platform/forks fully lowered and the lift in a horizontal position
 - Check the release valve adjustment
 - Check all screw and bolt connections for tightness

1 YEAR:

- Check all parts for wear and replace defective parts as necessary

- Drain and replace hydraulic fluid
- Check readability of labels and safety warnings; replace if needed

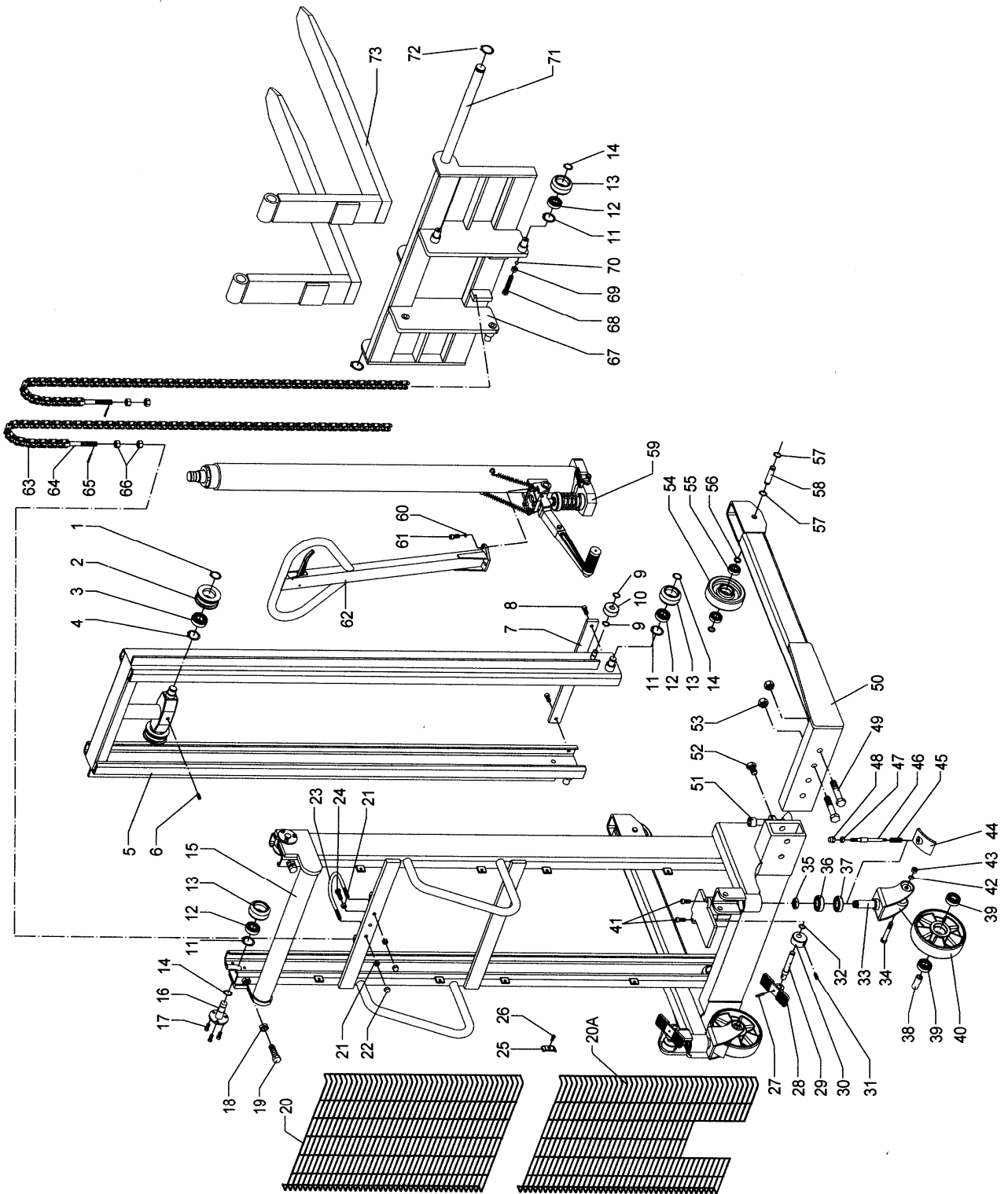
⚠ WARNING *Do not attempt to repair lifts unless you are trained and authorized to do so. Serious injury could result.*

⚠ WARNING *These products may not be altered in any way without written permission from the manufacturer.*

7. Troubleshooting Chart

Symptom	Possible Cause(s)	Corrective Action
Forks doesn't raise, doesn't raise fully, or raises slowly	<ol style="list-style-type: none"> 1. Low hydraulic fluid level 2. Air in the hydraulic system 3. Contron handle is in the wrong position 4. Load is too heavy. Overload release valve is being activated 5. Temperature is too low and the hydraulic oil has become too thick 	<ol style="list-style-type: none"> 1. Add approved hydraulic fluid as noted on page ?? (in Maintenance section) 2. Follow the procedure for releasing air from the pump on page ?? (in Maintenance section) 3. Let the control handle to the right position (in Operation section) 4. Reduce load 5. Move truck to a warmer location
Forks doesn't lower or doesn't lower fully	<ol style="list-style-type: none"> 1. Obstacle located under forks/platform, in fork mechanism, etc 2. The piston rod (264) or pump body (261) has deformed from excess or uneven loading (See Figure ?) 3. Forks/platform was kept in the raised position for a long time, allowing the piston rod to rust or jam 4. The adjust nut (104) and set screw (234) is in the wrong position 	<ol style="list-style-type: none"> 1. Use caution removing the obstacle 2. Replace the piston rod or pump (See Figure ?) 3. Lubricate the piston. Replace if necessary. Keep the forks/platform in the lowered position when not in use 4. Adjust it (in Operation section)
Forks lower without control handle to the "lower" position	<ol style="list-style-type: none"> 1. Oil impurities are preventing the release valve from fully closing 2. Some hydraulic components or seals are cracked or worn 3. Air in the hydraulic system 4. The adjust nut (104) and set screw (234) is in the wrong position 	<ol style="list-style-type: none"> 1. Drain and replace hydraulic fluid with approved fluid as noted on page ?? (in Maintenance section) 2. Inspect and replace components as needed 3. Follow the procedure for releasing air from the pump on page ?? (in Maintenance section) 4. Adjust it (in Operation section)

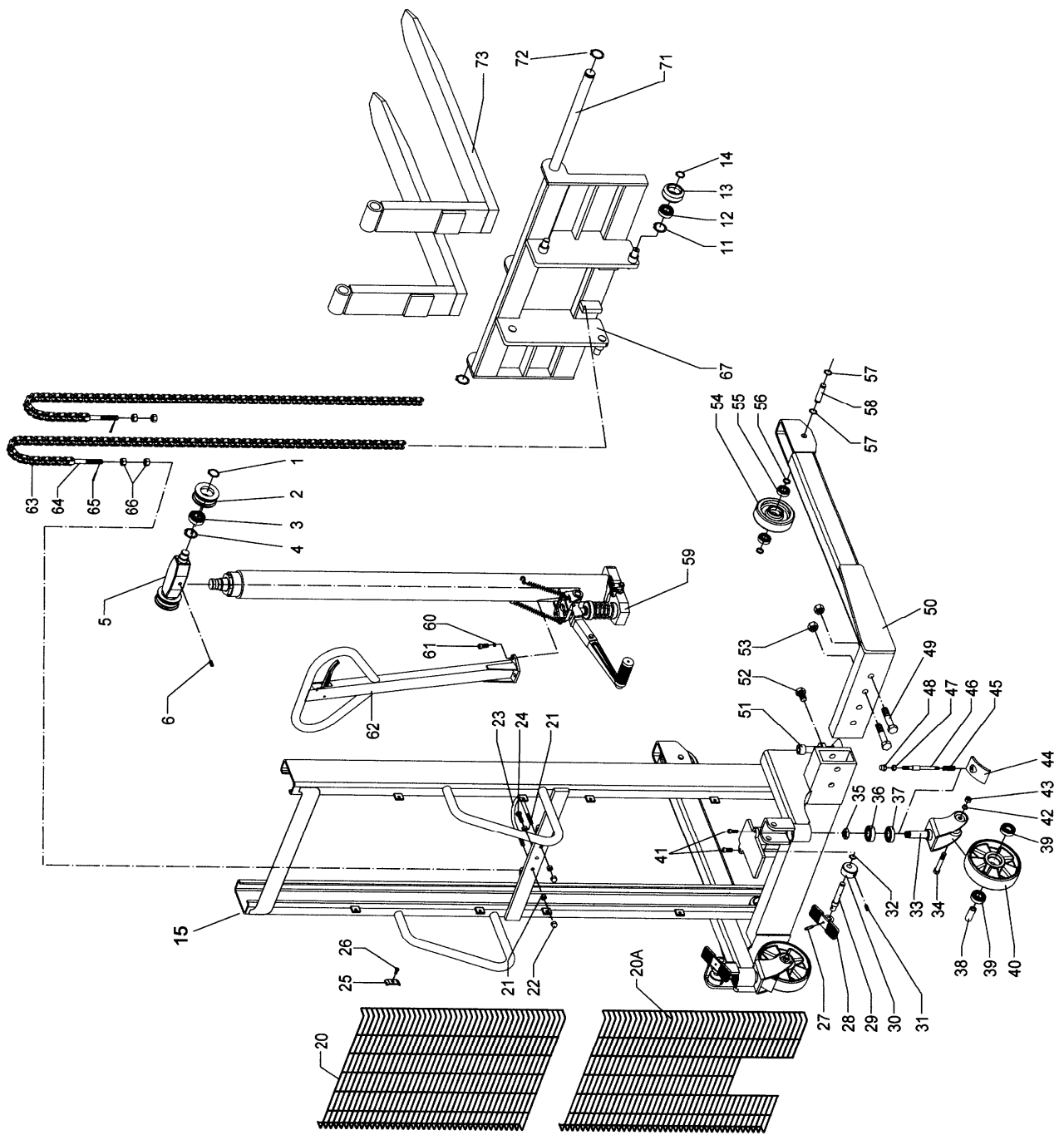
Models SFH1025AG and SFH1030AG



Repair Parts List for Fork Lift

No.	Description	Qty.	No.	Description	Qty.
1	Locking Ring	2	39	Bearing	4
2	Chain roller	2	40	Big Wheel	2
3	Bearing	2	41	Bolt	2
4	Locking ring	2	42	Elastic Washer	2
5	Inner mast	1	43	Nut	2
6	Screw	1	44	Brake Plate	2
7	Connect plate	1	45	Spring	2
8	Screw	2	46	Bolt	2
9	Locking ring	4	47	Nut	2
10	Roller	2	48	Nut	2
11	Locking ring	8	49	Bolt	4
12	Bearing	8	50	Straddle leg, right	1
13	Roller	8		Straddle leg, left	1
14	Locking ring	8	51	Hold bolt kit	2
15	Outer mast	1	52	Bolt	2
16	Shaft with shoulder	2	53	Nut	4
17	Bolt	6	54	Load roller	2
18	Nut	2	55	Bearing	4
19	Bolt	2	56	Washer	4
20	Protective Grill, upper	1	57	Locking ring	4
20A	Protective Grill, lower	1	58	Axle for roller	2
21	Nut	3	59	Pump kit	1
22	Nut	2	60	Elastic washer	3
23	Hoop for pump cylinder	1	61	Bolt	3
24	Bolt	1	62	Handle kit	1
25	Press washer	8	63	Chain	2
26	Screw	8		(SFH1025AG)	2
27	Roll Pin	2		(SFH1030AG)	2
28	Foot Plate	2	64	Chain bolt	2
29	Shaft	2	65	Spilt pin	2
30	Cam	2	66	Nut	4
31	Screw	2	67	Carriage	1
32	Locking Ring	2	68	Bolt	4
33	Frame of Wheel with Brake	2	69	Nut	4
34	Screw	2	70	Steel ball	4
35	Nut	2	71	Long shaft	1
36	Bearing	2	72	Locking ring	2
37	Bearing	2	73	Fork	2
38	Axle of Wheel	2			

Models SFH1016AG



Repair Parts List for Fork Lift

No.	Description	Qty.	No.	Description	Qty.
1	Locking Ring	2	38	Axle of Wheel	2
2	Chain roller	2	39	Bearing	4
3	Bearing	2	40	Big Wheel	2
4	Locking ring	2	41	Bolt	2
5	Hold plate for chain	1	42	Elastic Washer	2
6	Screw	1	43	Nut	2
			44	Brake Plate	2
			45	Spring	2
			46	Bolt	2
			47	Nut	2
11	Locking ring	4	48	Nut	2
12	Bearing	4	49	Bolt	4
13	Roller	4	50	Straddle leg, right	1
14	Locking ring	4		Straddle leg, left	1
15	Mast	1	51	Hold bolt kit	2
20	Protective Grill, upper	1	52	Bolt	2
20A	Protective Grill, lower	1	53	Nut	4
21	Nut	3	54	Load roller	2
22	Nut	2	55	Bearing	4
23	Hoop for pump cylider	1	56	Washer	4
24	Bolt	1	57	Locking ring	4
25	Press washer	8	58	Axle for roller	2
26	Screw	8	59	Pump kit	1
27	Roll Pin	2	60	Elastic washer	3
28	Foot Plate	2	61	Bolt	3
29	Shaft	2	62	Handle kit	1
30	Cam	2	63	Chain	2
31	Screw	2	64	Chain bolt	2
32	Locking Ring	2	65	Spilt pin	2
33	Frame of Wheel with Brake	2	66	Nut	4
34	Screw	2	67	Carriage	1
35	Nut	2	71	Long shaft	1
36	Bearing	2	72	Locking ring	2
37	Bearing	2	73	Fork	2