

Pulley Weight:	Kg. 4,6
Maximum Load:	Kg. 50
Minimum Load:	Kg. 8÷10
Maximum Height:	m. 30
Allowed rope diametres:	mm. 18,20
Connection to standard pipe for scaffoldings or to Tornomeccanica rotating support.	

Securpulley safety pulley

is a **TORNOMECCANICA** patent intended to revolutionise scaffolding work, eliminating the risk of a fall of the suspended loads.

The exclusive automatic braking system stops the lifted load as the rope is released by the operator.

All the manoeuvres normally done by the scaffolding erector are allowed:

- **LIFTING OF LOADS**
- **LOWERING OF LOADS**
- **LOWERING OF THE EMPTY ROPE**

without risk and with the possibility to interrupt the lifting for rest with heavy loads or high working heights.

Securpulley is the only rope sheave for building industry that conforms to the Safety requirements of the Machinery Directive ECC 89/392, as witnessed by the **CE** mark.

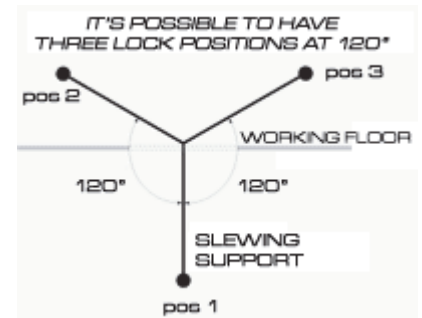
SLEWING ALUMINIUM MODEL



fast insert diameter
In 1.88

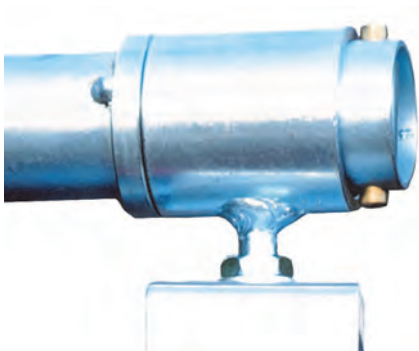
support load
Lbs 9.8

maximum working load
Lbs 110



The connection clamp made of hot printing and zincated steel assures maximal safety in case of emergency brake of load thanks to its undeforming property.

FIXED MODEL



fast insert diameter
In 1.88

support load
Lbs 13.7

maximum working load
Lbs 110



The fast coupling allow to assemble and take apart the sheave quickly and safety without special tools.