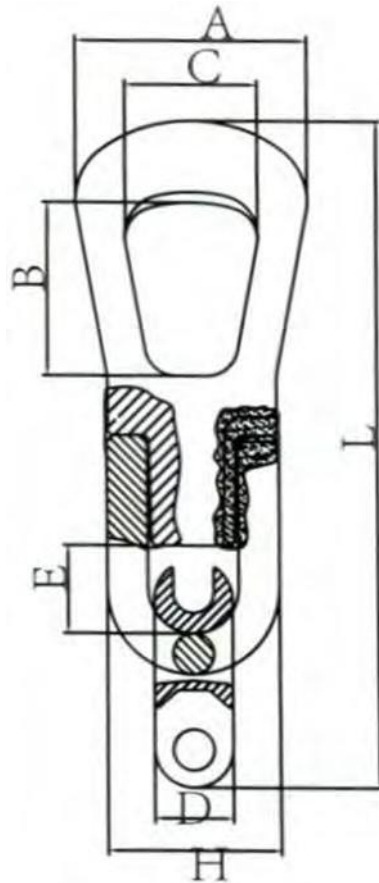




Grade 8 Ring Clutch

Instructions for Use





Description

The LiftinGear Grade 8 ring clutch is designed to lift concrete elements with cast in half circle ring pin connections, only the correct clutch will fit the anchor. It consists of two components a manually operated ring connector and a lifting link, it allows a precast panel to be easily lifted turned or swivelled.

Weights and Dimensions

Grade 8 Ring Clutch									
Product Code	WLL	Dimensions (mm)							Net weight
	tonnes	A	B	C	D	H	E	L	Kg
RING-CLUTCH-2.5T	2.5	95	70	59	27	58	35	264	1.6
RING-CLUTCH-5T	5	117	85	66	37	82	45	333	3.6
RING-CLUTCH-10T	10	148	110	84.6	50	110	56	424	9

WARNING - Never exceed the Working Load Limit (WLL) - FOS 5:1

Installation and Use

All lifting operations should only be carried out by a suitably trained and experienced person, ensure the area is clear of personnel and obstructions before commencing the lift, large loads should be controlled with tagline(s).

Before use, the ring clutch should be inspected for deformation, cracking, wear, mechanical or heat damage and corrosion, if in doubt consult a competent person before use.

Do not leave loads suspended for extended periods.

1. Attach to the concrete panel by lowering the ring clutch into place over the lifting insert, open the jaw by operating the manual lever and place the jaws around the lifting point, rotate the lever ensuring the latch is completely closed before lifting.
2. Raise the load, the clutch is designed to take the maximum WLL at 90° to the load surface, if the load is to be tilted or rotated position the clutch to ensure that the load is taken in the plane of the eye.

WARNING – Do not lift across the eye, this can cause the eye to shear and the load to drop.

3. Once the load is in position and secure, disengage the ring clutch by releasing the tension and operating the release lever.

Warning – Do not use with High-Capacity System anchors

Inspection and Maintenance

Regular inspections should be carried out and recorded by a competent person in accordance with applicable national standards or at least annually.

Before inspection, the ring clutch should be clean and free from oil, dirt and rust which may hide defects.

- Inspect for general condition and repair.
- Ensure the lifting eye is free to rotate in all directions.
- Check the clutch body for wear, deformation or cracking.
- Check the curved bolt for wear, deformation or cracking.
- Check the jaw for wear.
- Destroy any item by cutting the lifting eye before disposal.

If used in aggressive environments or frequently under full load the period of inspection should be shortened as determined by a competent person.

If in any doubt remove the ring clutch from service and refer to a suitably qualified person for advice.

The ring clutch should not be modified or repaired, if in any doubt replace with a new item.