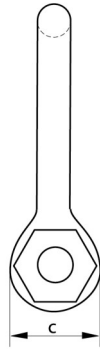
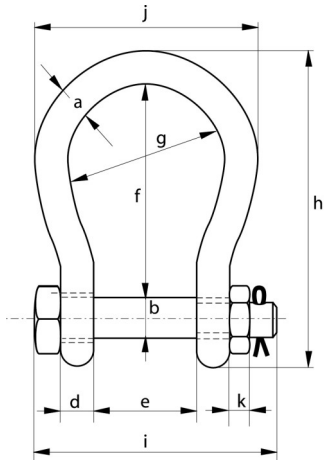




Green Pin® BigMouth Shackle G-4263

Bow Shackle with Safety Bolt



Material	Bow and pin alloy steel, Grade 8, quenched and tempered
Safety Factor	MBL equals 6 x WLL
Finish	Hot dipped galvanised
Temp Range	-20°c up to +200°c
Certification	As standard; EC Declaration of Conformity Upon request; 2.1, 2.2, 3.1, MTC ^a , CE

WLL	Diameter Bow	Diameter Pin	Diameter Eye	Width Eye	Width Inside	Length Inside	Width Bow	Length	Length Bolt	Width	Thickness Nut	Product Code	Weight Each
t	a	b	c	d	e	f	g	h	i	j	k		kg
4.75	22	25	52	22	63	112	88	173	157	132	22	13697	2.08
6.5	25	28	59	25	75	135	105	204	183	155	25	13698	3.14
8.5	28	32	66	28	82	148	115	225	205	171	27	13696	4.36
9.5	32	35	72	32	90	162	126	248	224	190	30	13699	5.95
12	35	38	79	35	100	180	140	274	245	210	33	13700	7.87
16	38	42	88	38	106	216	159	319	248	235	19	13701	12.5
25	45	50	103	45	127	248	175	370	296	265	23	13702	16.7
30	50	57	118	50	146	273	207	411	332	307	26	13703	25.0
55	65	70	145	65	165	314	213	487	391	343	32	13704	45.0
75	83	83	164	83	184	330	254	537	460	420	39	13705	70.0