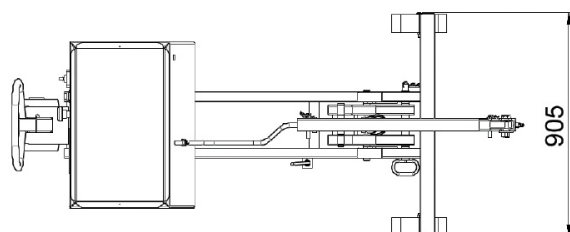
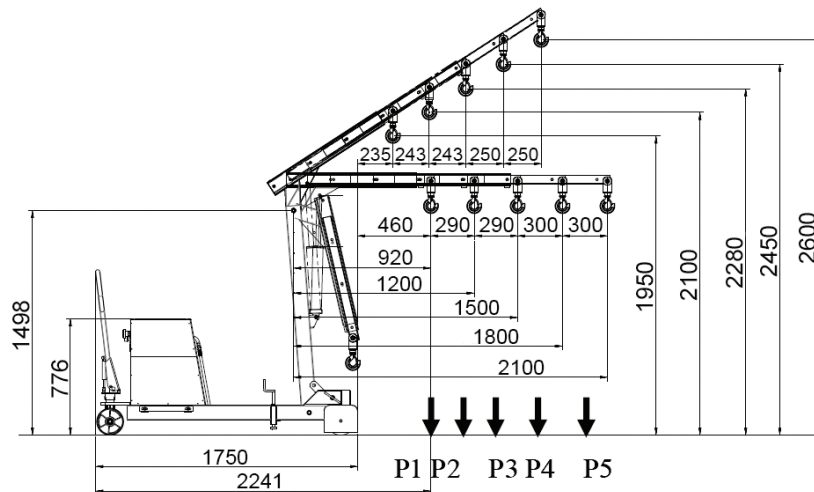


Counter-balance Floor Crane

Product Code: CBFC



- Heavy duty design and build
- Fitted with heavy duty steer wheels & rear wheels
- Double acting Hydraulic Pump unit fitted with pressure relief valve to prevent overloading
- Heavy duty Swivel Hook with Safety Catch
- 5 variable capacity settings (see loading chart for more details)
- 5 position telescopic jib
- Easily removable weights
- Extremely easy to manoeuvre
- Weight of unit without counter-balance weights: 230kg
- Weight of unit with counter-balance weights: 530kg
- Fully tested and certified



Capacity	
P1	550kg
P2	400kg
P3	300kg
P4	220kg
P5	150kg